

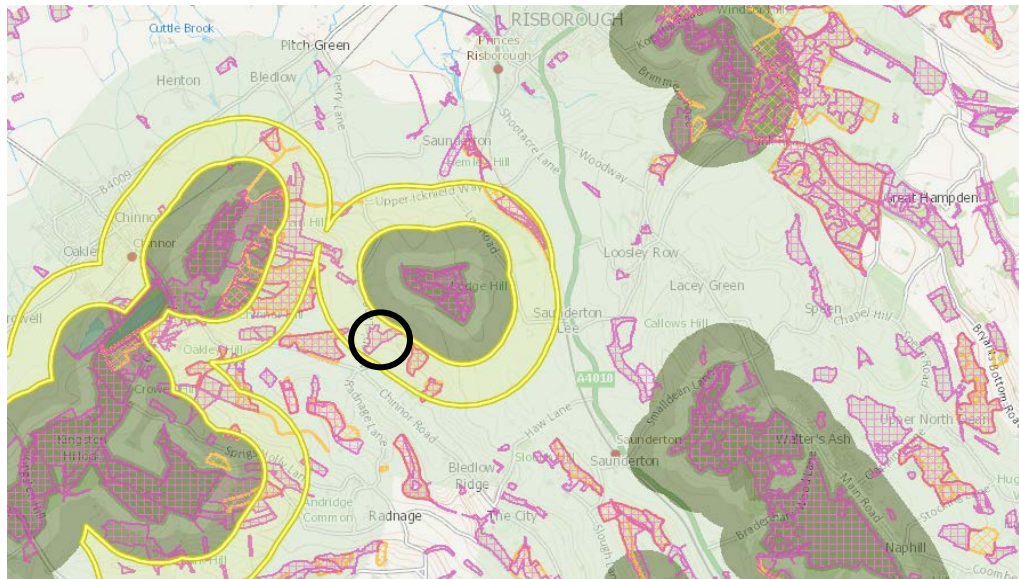
Location of the site in a buffer zone for the SSI at Lodge Hill and on an important water aquifer

The site is in a beautiful part of the Chilterns and within the buffer zone of a protected site of scientific interest (SSI). In relation to this site, the Chilterns Conservation Board, says that;

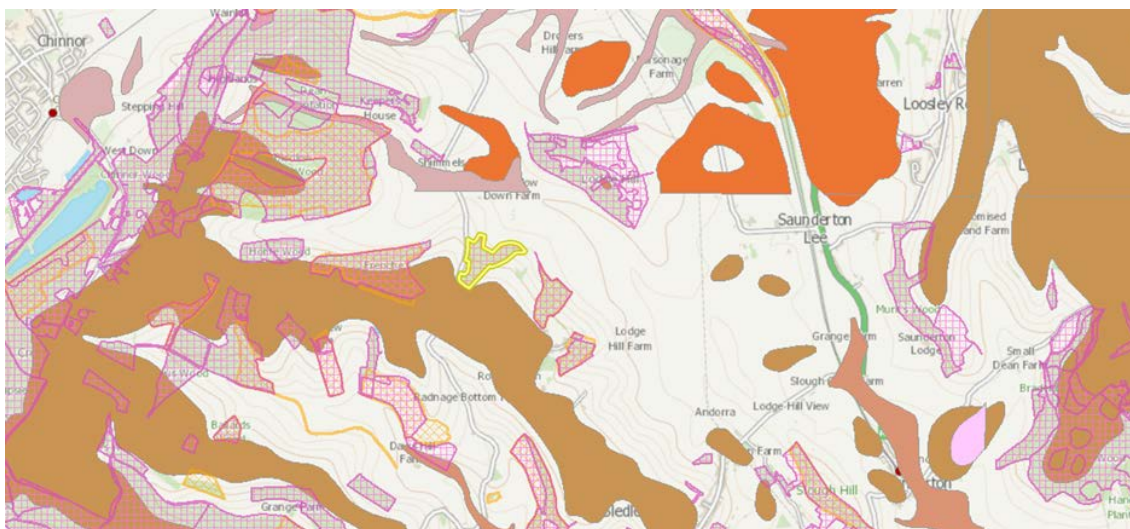
"...landscape quality and scenic beauty is high..... with a 'Rolling and undulating topography, with steep slopes contrasting with flatter valley ridges. A smooth and sweeping landform..."

Despite this, Green Belt & AONB protections are being ignored for the sake of convenience. Most households are within 7 miles/10 mins of an alternative. (council data).

Aerial Buffer Zones around local protected sites (SAC and SSSI) that include Wigans Site



Wigans Tip on Unconfined Chalk Making Aquifer Vulnerable to Pollution from Tip



Unconfined permeable Chalk

Wigans Tip and Woods

Clay